

UNIT #13 - FIRST FLOOR PLAN



hs&t group, inc.

PROFESSIONAL CIVIL ENGINEERS & LAND SURVEYORS
 76 HAMMOND STREET - 2ND FLOOR
 WORCESTER, MASSACHUSETTS 01610-1723
 PHONE: 508-757-4944 EMAIL: INFO@HSTGROUP.NET
 FAX: 508-752-8895 WWW.HSTGROUP.NET

PROJECT:

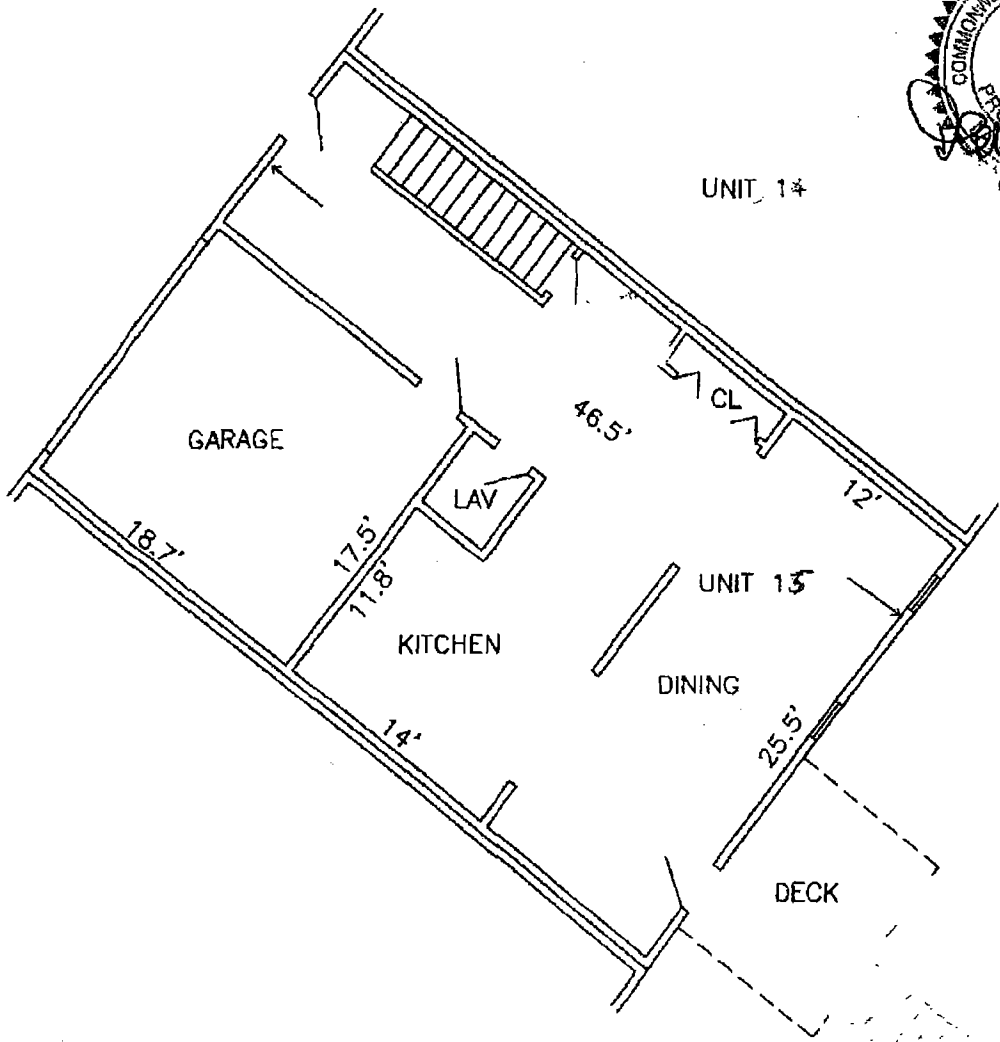
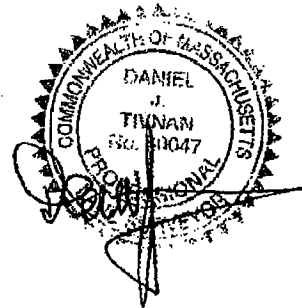
CONDOMINIUM DEED
 WEST, ECCLYSTON MA

OWNER:

AF TERRACE LLC

DRAWN BY: DJT	SCALE: 1" = 10'	DATE: 01-12-09
COMP'D BY: DJT	CHK'D BY: DJT	ZONE: SR

I hereby certify that the attached plan is a copy of a portion of the plan of "26 Jasmine Dr. Condominium" heretofore filed with the Master Deed dated _____ duly recorded herewith, with Worcester District Registry of Deeds which copy shows the unit designation of the unit being conveyed and immediately adjoining unit and it fully and accurately depicts the layout of unit 13, its location, dimensions, approximate area, main entrance, and the immediate common areas to which it has access, as built.



FIRST FLOOR
 TOTAL FLOOR AREA: 1072 s.f.+/-

AFRA TERRACE CONDOMINIUM

UNIT #15 - SECOND FLOOR PLAN



hst&t group, inc.

PROFESSIONAL CIVIL ENGINEERS & LAND SURVEYORS
78 HAMMOND STREET - 2ND FLOOR
WORCESTER, MASSACHUSETTS 01610-1723
PHONE: 508-757-4944 EMAIL: INFO@HSTGROUP.NET
FAX: 508-752-8895 WWW.HSTGROUP.NET

PROJECT:

15

OWNER:

DRAWN BY:

DJT

SCALE:

1" = 10'

DATE:

01-12-09

COMP'D BY:

DJT

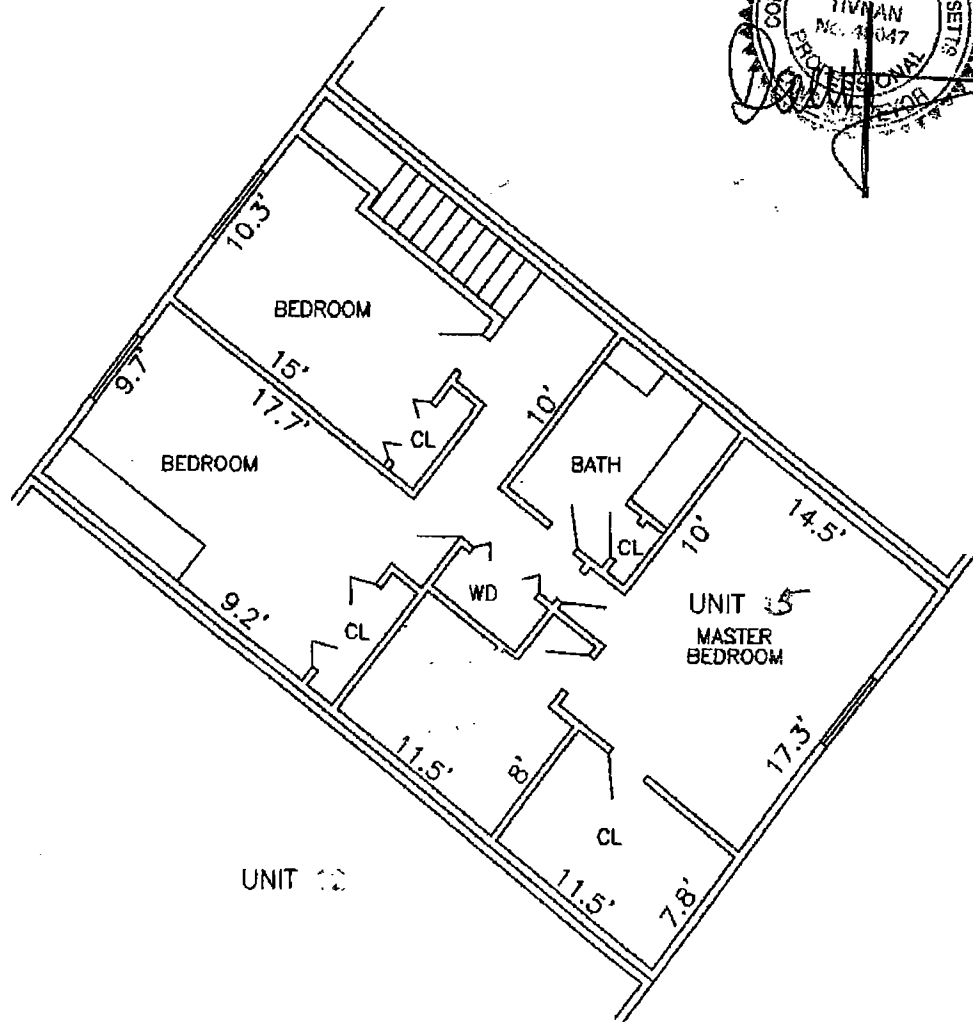
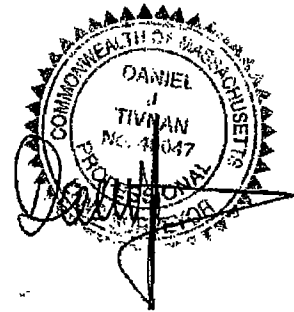
CHK'D BY:

DJT

ZONE:

SR

I hereby certify that the attached plan is a copy of a portion of the plan of "26 Jasmine Dr. Condominium" heretofore filed with the Master Deed dated _____ duly recorded herewith, with Worcester District Registry of Deeds which copy shows the unit designation of the unit being conveyed and immediately adjoining unit and it fully and accurately depicts the layout of unit 13, its location, dimensions, approximate area, main entrance, and the immediate common areas to which it has access, as built.



SECOND FLOOR

TOTAL FLOOR AREA: 1295 s.f.+/-

AFRA TERRACE CONDOMINIUM

UNIT #15 - BASEMENT PLAN



hs&t group, inc.

PROFESSIONAL CIVIL ENGINEERS & LAND SURVEYORS
 75 HAMMOND STREET - 2ND FLOOR
 WORCESTER, MASSACHUSETTS 01610-1723
 PHONE: 508-757-4944 EMAIL: INFO@HSTGROUP.NET
 FAX: 508-752-8895 WWW.HSTGROUP.NET

PROJECT:

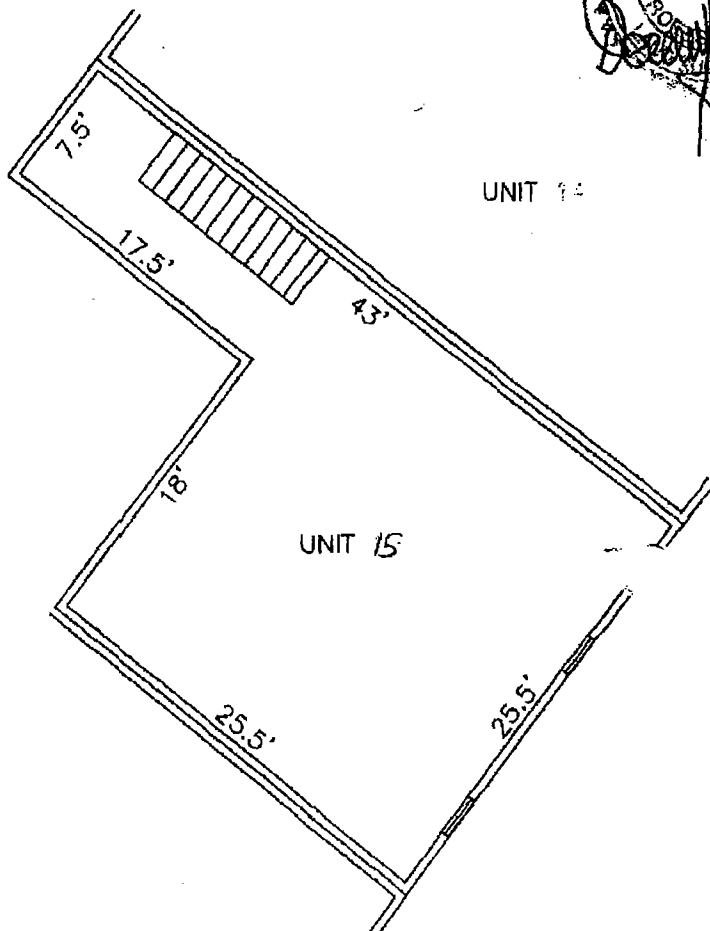
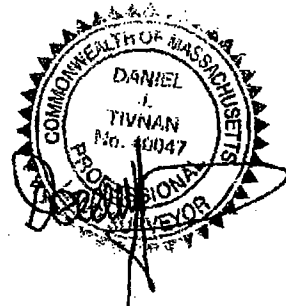
2575 ...
 ... WORCESTER

OWNER:

... LLC

DRAWN BY: DJT	SCALE: 1" = 10'	DATE: 01-12-09
COMP'D BY: DJT	CHK'D BY: DJT	ZONE: SR

I hereby certify that the attached plan is a copy of a portion of the plan of "26 Jasmine Dr. Condominium" heretofore filed with the Master Deed dated ... duly recorded herewith, with Worcester District Registry of Deeds which copy shows the unit designation of the unit being conveyed and immediately adjoining unit and it fully and accurately depicts the layout of unit 13, its location, dimensions, approximate area, main entrance, and the immediate common areas to which it has access, as built.



UNIT 14

UNIT 15

- BASEMENT

TOTAL FLOOR AREA: 851 s.f.+/-

AFRA TERRACE CONDOMINIUM